

mimatic[®]

Tool Systems

Your Partner For Clever Tooling

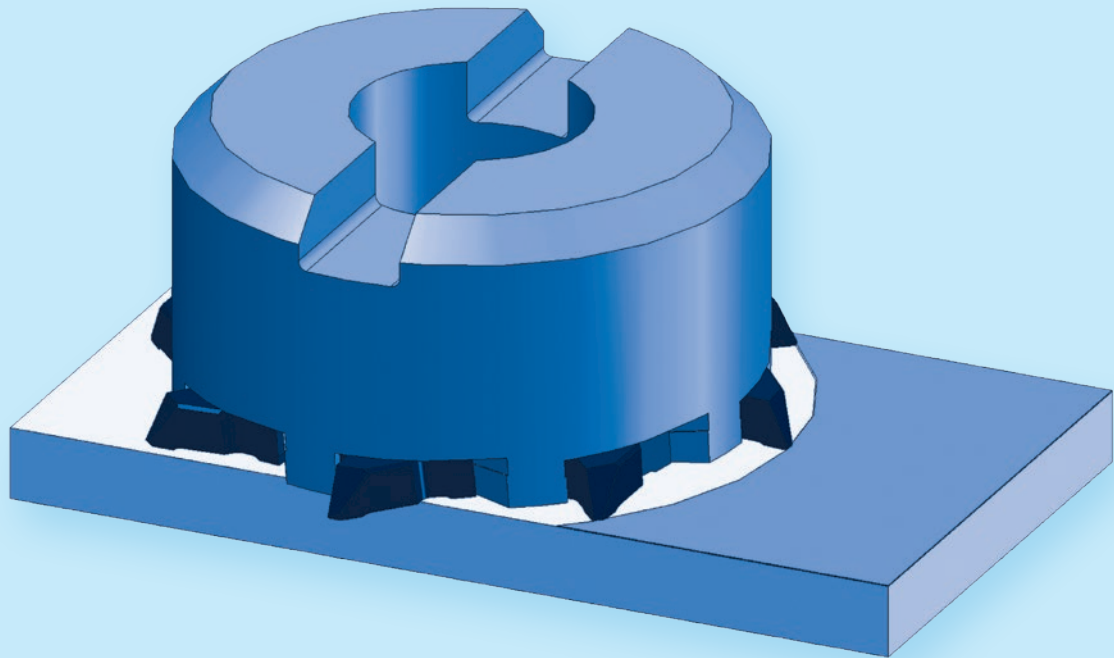
Cutting Tools

2019



Manufacturer of Precision Tools Since 1974

Face Finish Milling



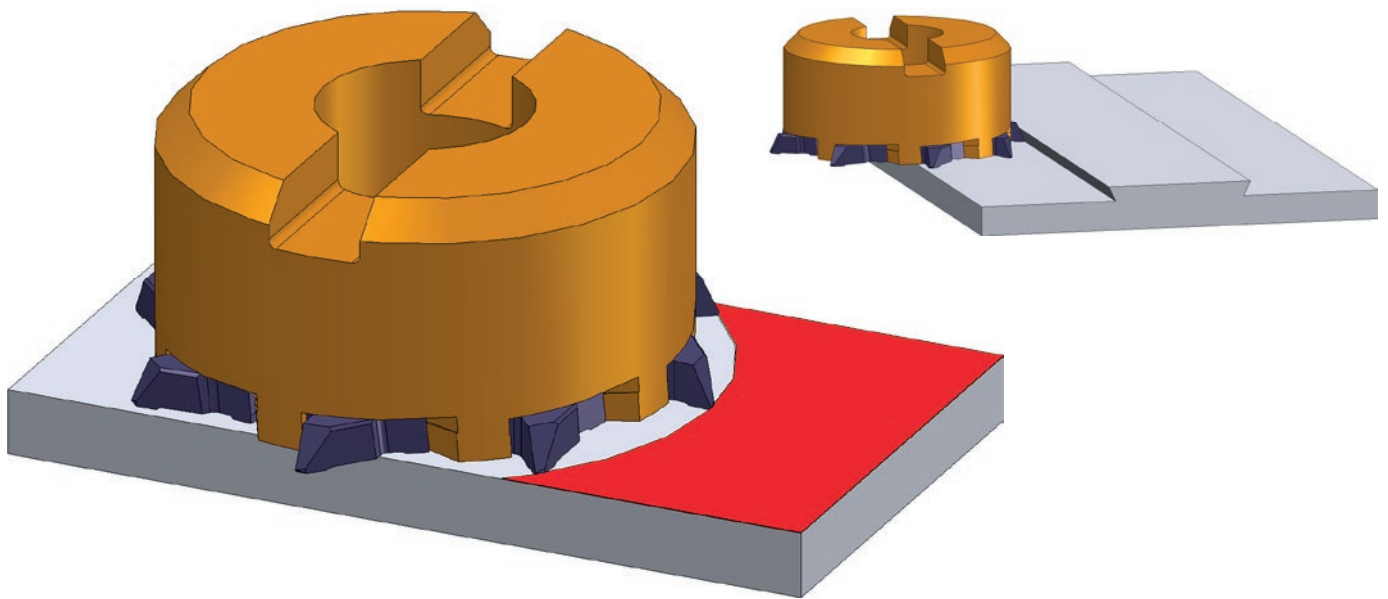
TriMILL

**with Trailing Chamfer Edge for Very Good Surfaces
wto Finish Milling**

**Advantages of indexable inserts with
integrated trailing chamfer**

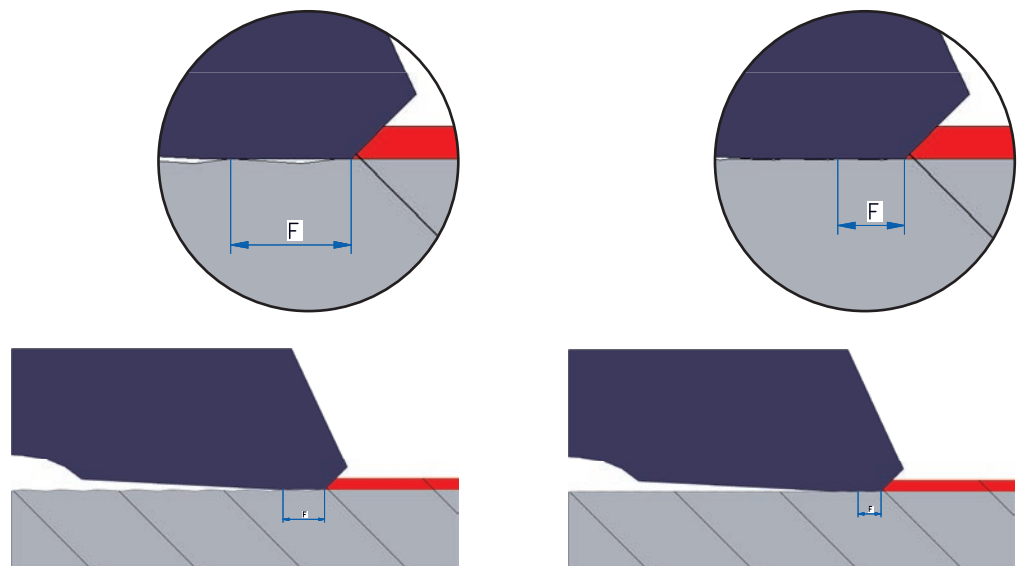
compared to standard indexable inserts with
normal corner radius at same depth of cut:

- **2-3 fold better surface quality**
with the same feed rate
- **2-3 old higher feed rates**
with the same surface quality



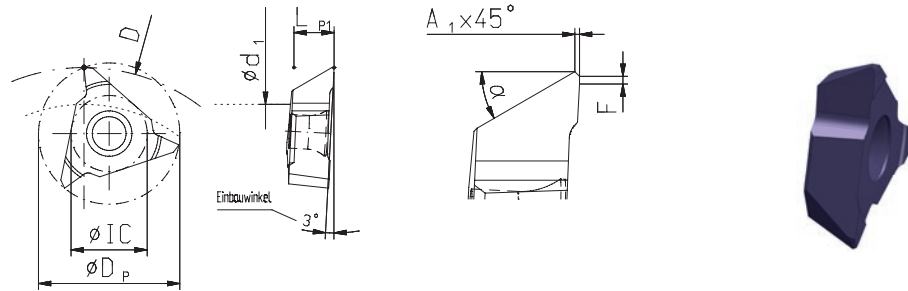
For high performance cutting in all areas, we have
developed a variety of cutting geometries for internal
and external milling operations. This trailing chamfer
has the function of secondary cutting edge with mini-

mal rear position and thus minimizes the secondary
cutting edge angle to 0°. Thus the surface automati-
cally improves to 2-3 times compared with the calcula-
ted values.



Slot Milling

- Insert holder see page 79-80
- Cutting data see page 173

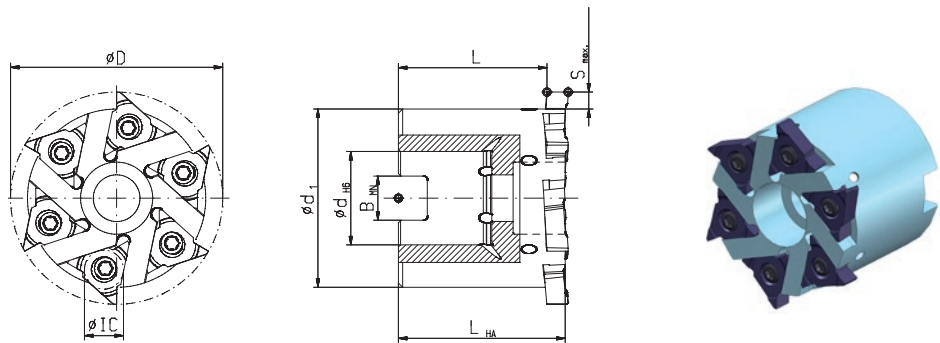


Typ 023	Typ 013
-------------------	-------------------

Type	DP mm	IC mm	LP1 mm	A1 x 45° mm	F mm	α	Order No. TINAMATIC
023	17,5	9,2	5	0,3	0,5	25°	149516
013	23	12,4	6,5	0,3	0,5	28°	149472

Circular Milling Tools

- Inserts see page 79
- Cutting data see page 173



Typ 023		IC 9,2
Ø min. 40 mm	S max. 4,0 mm	

Order No.	D mm	dH6 mm	d1 mm	Smax. mm	LHA mm	L mm	BMM mm	Inserts	Spare part No.	
123461	50	22	42	3,9	39,3	34,97	10,4	6	T15 IP Screw-driver*	Screw*
161485 NEW	63	27	55	4,0	39,3	34,97	12,4	8	111671	107547

Screw torque max. 3,8 Nm


Cutter clamping screw internal hexagon



Order No. 114684

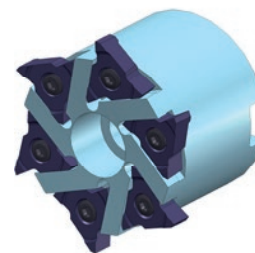
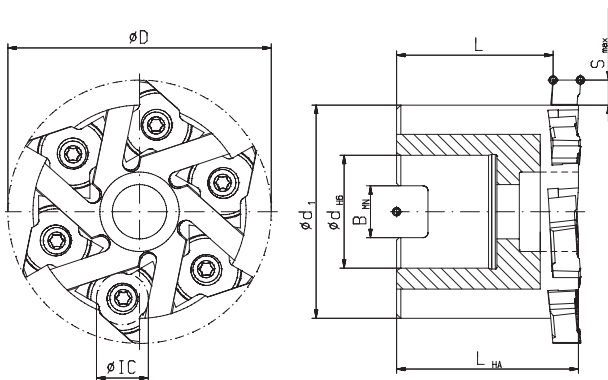
* Screwdriver and clamping screw included in delivery

Circular Milling Tools

- Inserts see page 79
- Cutting data see page 173

Typ **013**  **IC 12,4**

Ø min. 65 mm  S max. 6,0 mm 



Order No.	D mm	dH6 mm	d1 mm	S max. mm	LHA mm	L mm	B MN mm	Inserts
123435	63	27	51	6	43,5	37,5	12,4	6


Spare part No.

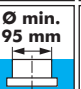
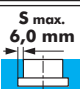
T20 IP Screw-driver*	Screw*
111594	107551

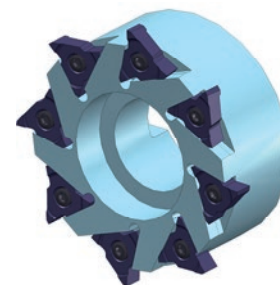
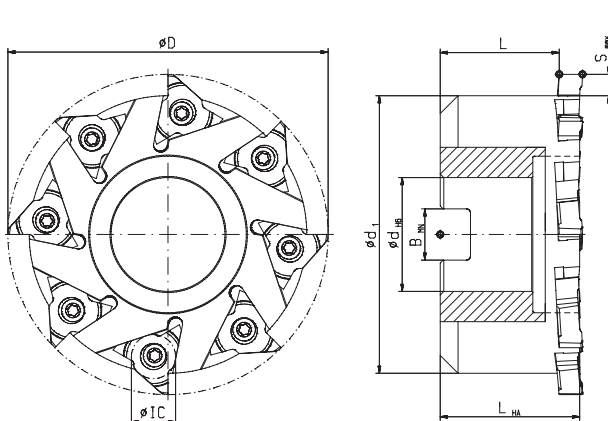
Screw torque 5,5 Nm

Cutter clamping screw internal hexagon

Order No. 114695

Typ **013**  **IC 12,4**

Ø min. 95 mm  S max. 6,0 mm 





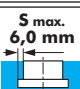
Order No.	D mm	dH6 mm	d1 mm	S max. mm	LHA mm	L mm	B MN mm	Inserts
123436	90	32	78	6	39,2	33,5	14,4	8

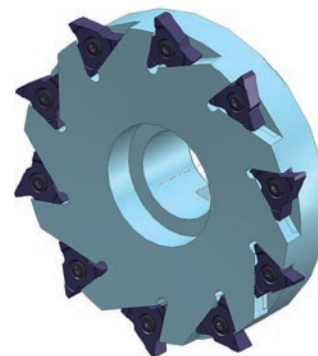
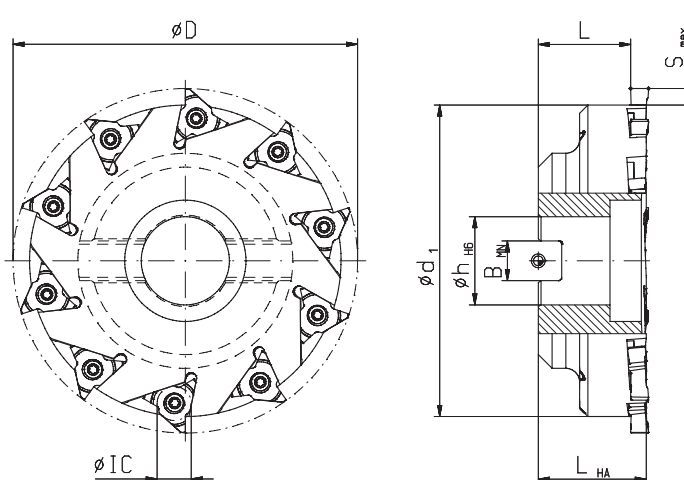
Spare part No.

T20 IP Screw-driver*	Screw*
111594	107551

Screw torque 5,5 Nm

Typ **013**  **IC 12,4**

Ø min. 95 mm  S max. 6,0 mm 



Order No.	D mm	dH6 mm	d1 mm	S max. mm	LHA mm	L mm	B MN mm	Inserts
134561	125	32	113	6,0	39,2	33,5	14,4	10

Spare part No.

T20 IP Screw-driver*	Screw*
111594	107551

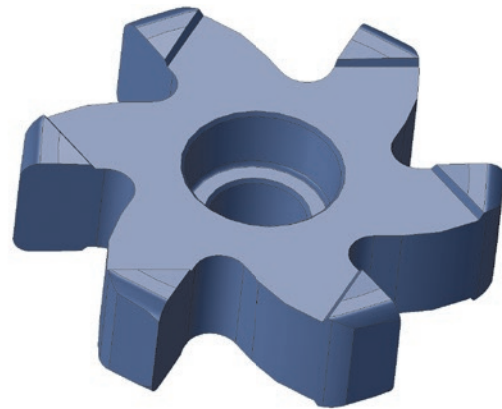
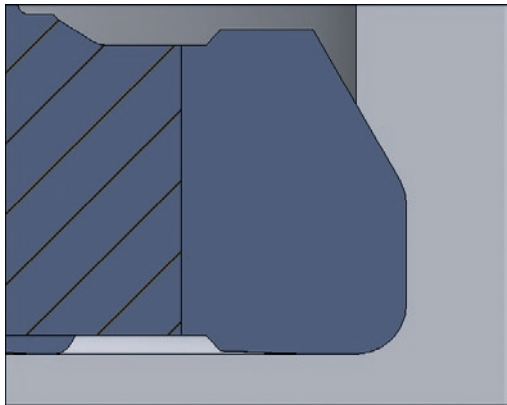
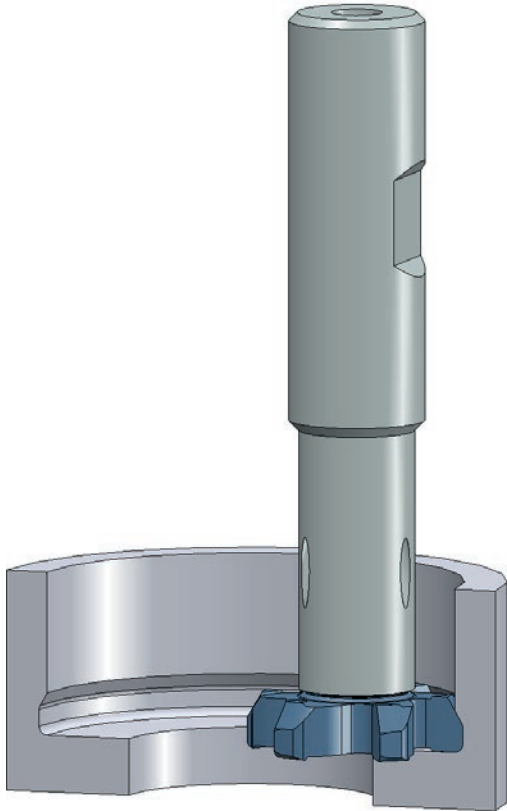
Screw torque 5,5 Nm

* Screwdriver and clamping screw included in delivery

PolyMILL

Face Finish Milling with PolyMILL on Request

2

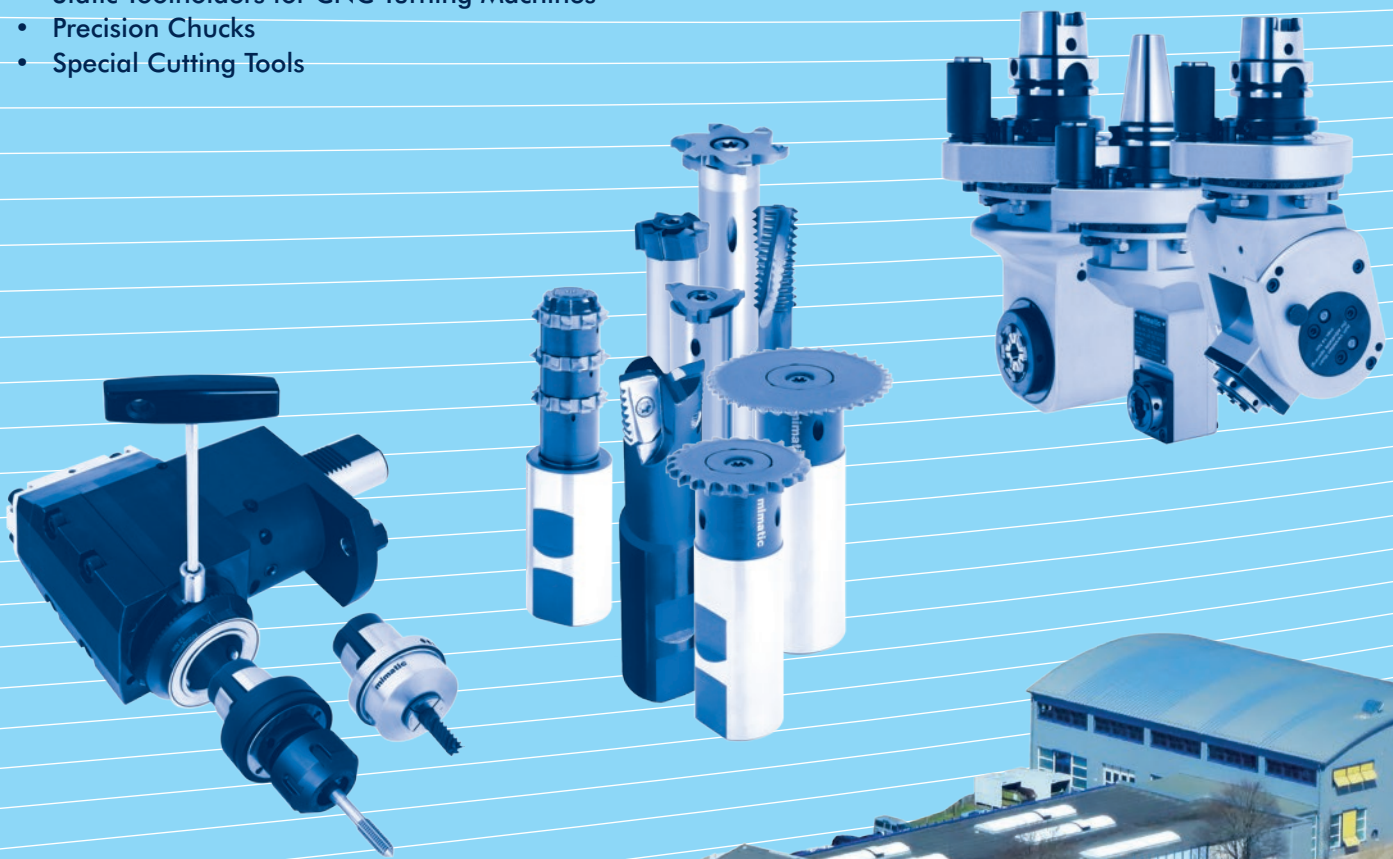


mimatic®

Tool Systems

Your Partner For Clever Tooling

- Circular- and Thread Milling Tools
- RPK-Reamers with Polygonal Interface
- Driven Toolholders for CNC Machining Centers
- Driven Toolholders for CNC Turning Machines
- Multi-Spindle Technology
- Modular Quick Change Toolholders mimatic® mi
- Static Toolholders for CNC Turning Machines
- Precision Chucks
- Special Cutting Tools



160974 KATALOG-ZW-E08



mimatic®
Tool Systems



mimatic GmbH

Westendstraße 3

D-87488 Betzigau

Phone +49 (0) 831 / 574 44-0

Fax +49 (0) 831 / 574 44-90

info@mimatic.de

www.mimatic.de